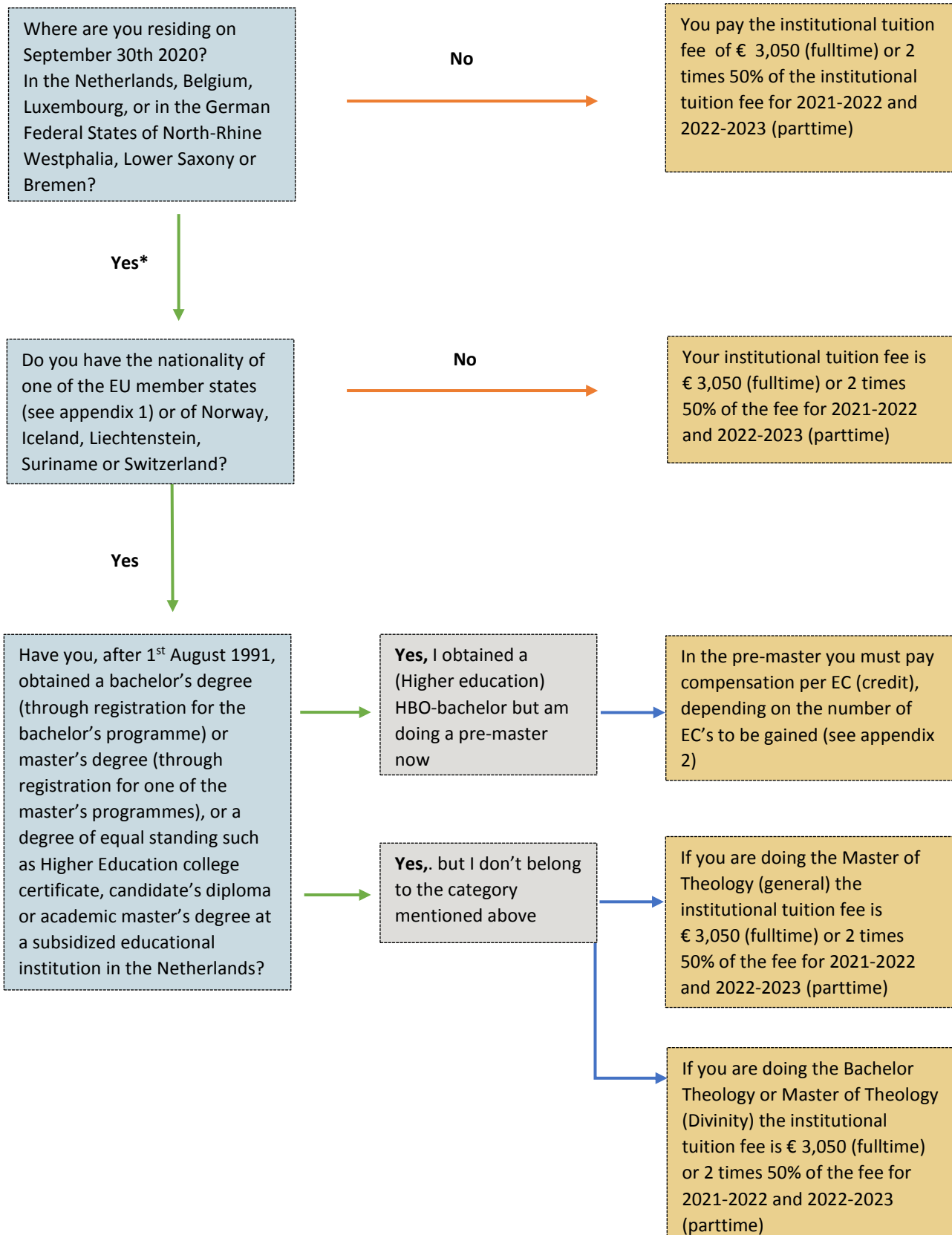
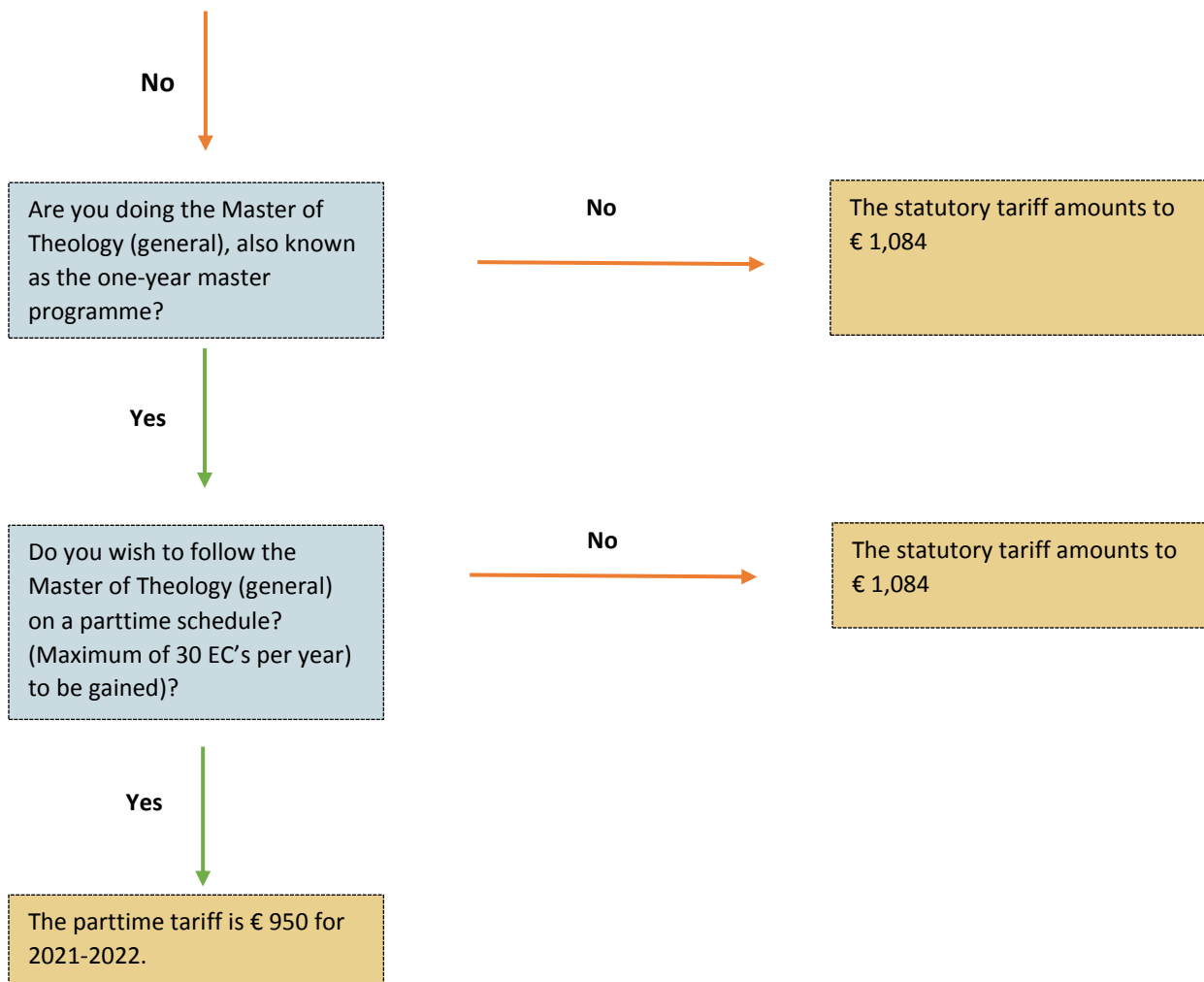


Regulations Tuition Fees

With the diagram below you can determine which tuition fee tariff you must pay in the academic year 2021-2022.





* You must be registered in the municipal (gemeente) basis administration (GBA). You must be able to prove this, upon request by the TUK, by means of an extract from the GBA. If you are unable to provide this extract, then you must pay the tariff of the institutional tuition fee of € 3,050.

Appendix 1: members European Union

Belgium	Greece	Austria
Bulgaria	Hungary	Poland
Cyprus	Ireland	Portugal
Czech Republic	Italy	Romania
Denmark	Latvia	Slovenia
Germany	Lithuania	Slovakia
Estonia	Luxembourg	Spain
Finland	Malta	Sweden
France	The Netherlands	

Appendix 2: Compensation to be paid per EC

Number of EC's	Euro per EC	Maximum in Euros
Up to 30	€ 35	€ 1,050
30-60	€ 49 (for the first 30 EC's) plus per EC	€ 2,520